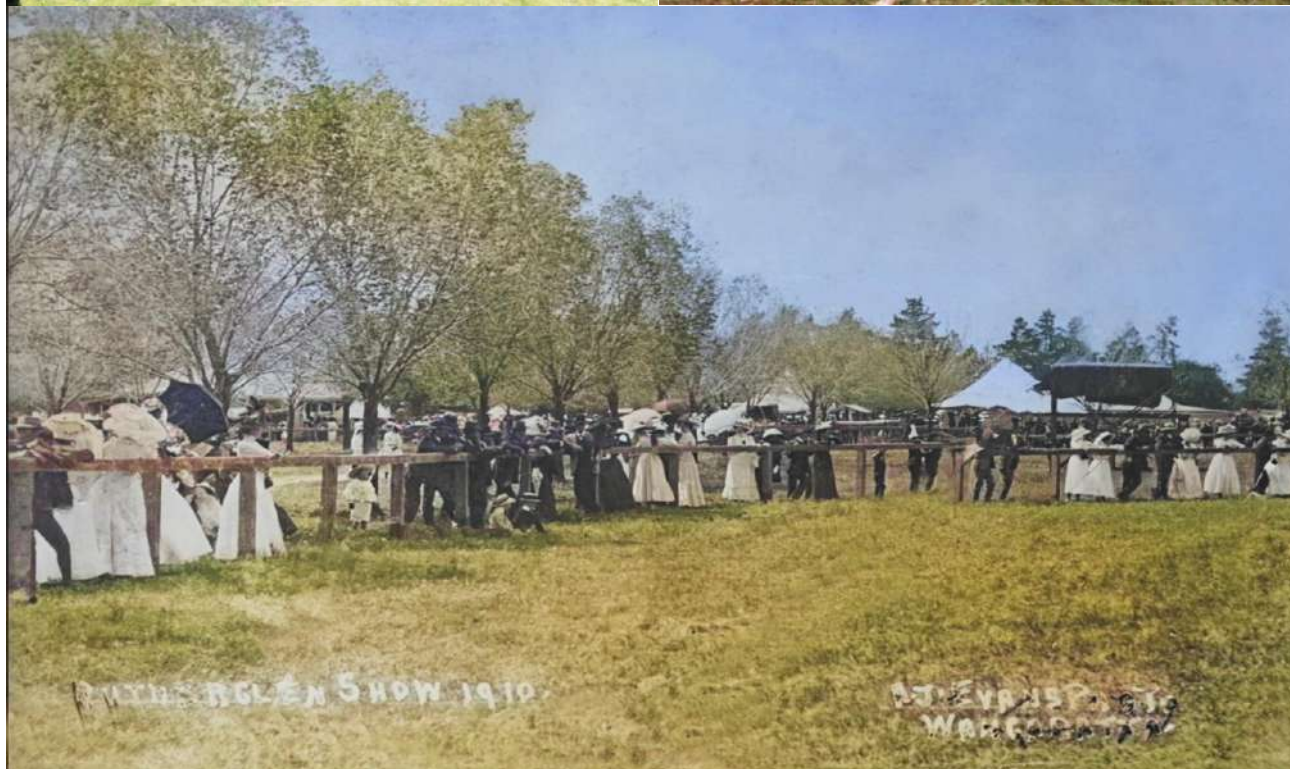


RUTHERGLEN SHOW

Sunday, 22 October 2023



JOIN IN THE FUN AT OUR TRADITIONAL
133rd ANNUAL SHOW

Entries close 6 pm Friday, 13th October 2023

O'CONNORS

CASE

COROWA

437-447 Honour Ave
Corowa, NSW, 2646

P: 02 6033 1666

E: corowa@jjoconnor.com.au

GREAT FARMERS DESERVE GREAT MACHINERY

OPERATING HOURS

Mon-Fri: 8:30AM – 5:00PM

Extended operating hours during harvest

AFTER-HOURS CONTACT

02 6033 1666



WHAT'S ON AT THE SHOW

ANIMALS & BIRDS

- Poultry & Eggs
- Junior Cattle Parading & Judging
- Junior Heifer Bonanza
- Stud Sheep & Fleece

HORSE RING

- Breeds & Open Classes
- WG Francis Memorial Supreme Saddle Horse of Show
- Fun Ring for Novices

DISPLAYS

- Machinery, Steam and Small Engines
- Heritage & Classic Motor Vehicles
- Model Railway Static & Working
- Sheep Shearing
- 3D Printing
- Vic Mowers
- Baker Seeds

TRADE & MARKET STALLS

- Homemade Sauces, Relishes, Jams, Chutneys, Curds, Spices
- Ice-cream & Gelati
- Minimelts
- Handmade Baby Clothes/Items
- Preserves and Pickles

PRIMARY SCHOOL MARKET STALLS

- High School BBQ Lunch
- Luncheon/Afternoon Tea
- Showbags
- Soft drinks
- Coffee Van

PAVILION

- Flowers/Pot Plants Competition
- Men's Cake/Boorhaman Ladies Bake Off
- Hand Spinning and Weavers Demo
- Special Interest Displays
- Full Range of Pavilion Exhibits
- Tony Reeckman Memorial Prize - Photography

ACTIVITIES AREA

- Miss Show Girl / Boy & Tiny Tot
- "Jack O'Keefe Memorial" Pet Parade
- NE Border Axemen Woodchop
- Hay Ho Petting Zoo
- Dog High Jump Competition
- Tent Pegging Demonstration
- Snake Safe Show
- Face Painting/Balloon Artistry
- Children's Activity Tent
- Colonial Clydesdale Wagon Rides
- In The Groove Drum Sessions

VICTORIAN SHOWMEN'S GUILD SIDESHOW ALLEY

By attending and/or competing, members of the public consent to having their photograph taken at the Show, which may be used by the Society for promotional and publicity purposes in media, including social media.



WITH GRATEFUL THANKS TO OUR SPONSORS, DONORS, and SUPPORTERS

▪ Anne Reeckman	▪ Baker Seeds	▪ Corowa Vet Clinic
▪ Baxter's Concrete & Quarries	▪ De Bortoli Wines	▪ Brian Unthank Rural
▪ Nutrien Ag Solutions	▪ Caffeine N Machine	▪ Cann's Bus Lines
▪ Casella Family Brands (Morris Wines)	▪ Chiltern Handspinners & Weavers	▪ Chiltern Railroaders & Modelers
▪ Complete Body Craft	▪ Corcoran Parker Pty Ltd	▪ Corowa Associated Stock Agents
▪ Corowa Classic Car Club	▪ Buscall Family Rutherglen	▪ Destination Rutherglen
▪ Elders Albury	▪ Elders Insurance Wodonga & Murray Goulburn	▪ Parkside Produce
▪ Colonial Clydesdales	▪ Federation Steel & Industrial	▪ Border Bearings
▪ Gary Douglas Shearing	▪ Saddleworld Wangaratta	▪ Kabneleh Arabians
▪ IGA Rutherglen	▪ Jack And The Fox	▪ Leather & Thread Furniture Wodonga
▪ Lilliput Ag	▪ Lindsay Hindle	▪ Grace Eatery
▪ Michell Wool	▪ AgNVet Services Rutherglen	▪ Murray Heritage Motor Vehicles
▪ O'Connors Farm Machinery- Major	▪ Pickers Café & Collectibles	▪ Pianto's Pest Control
▪ Poachers Paradise Hotel	▪ Potts and Schnelle	▪ R & J Zani Garden Supplies
▪ Rivalea	▪ Rutherglen Hardware	▪ Rutherglen Cricket Club
▪ Gelatina Rutherglen	▪ Rutherglen & District Garden Club	▪ Heather Williams
▪ Rutherglen High School	▪ Rutherglen Historical Society	▪ Rutherglen Landcare Group
▪ Rutherglen Lolly Shop	▪ Rutherglen Men's Shed	▪ Rutherglen News and Lotto
▪ Rutherglen Veterinary Clinic	▪ Simply Caravans Yarrawonga	▪ Stanton & Killeen Wines
▪ Trevor & Diane Smith	▪ Star Hotel Rutherglen	▪ Staughton Group Howlong
▪ RW Francis & Family	▪ The Hub Automotive	▪ The Other Place Rutherglen
▪ Horseland Albury	▪ Valentines Bakehouse	▪ Victorian Tent Pegging Association
▪ NE Border Axeman's Association	▪ St Francis of Assisi Primary School Baranduda	▪ Family of the Late AG Williams

INDEX	SECTION	PAGE
General Show Regulations		1
PAVILION CLASSES		
Pavilion Conditions & Closing Times		3
Art, Wood, Metal Crafts – High School	O	20-21
Arts & Crafts – Open/Novice	N	18
Baking & Preserves	K	14-17
Cut Flowers	D	6
Decorative Arrangements	E	7
Eggs & Poultry	6	30
Fruit & Vegetables	C	5
Group Exhibits (Club/Group/Daycare)	M	18
High School Homecrafts	O	19
Junior School Exhibits (Kinder – Primary) & School Displays	J	10-12
Open Needlework	R	22
Photography	S	17
Poster Competition	J	13
Pot Plants	F	9
Poultry & Eggs –Backyard, Open & Junior Classes	6	30-33
Farm Produce	1	29
VAS Competition Information & Classes		
Rural Ambassador		24
VAS Junior Ambassador		24
Cookery, Photography, Sewing, Crochet, Patchwork, Knitting, Embroidery		24
OTHER CLASSES & SPECIAL EVENTS		
Cattle – Junior Parading and Judging- Heifers Competition	7	34
Dog High Jumping Competition	A6	36
Pet Parade – “Jack O’Keefe Memorial”	A1	35
Show Girl/Show Boy Competitions		26
Stag/Hunting Dog Jump Competition	A6-2	36
Woodchopping Competition (NEBAA)		37
Tentpegging Demonstration		38
Separate Schedules for the below Competitions		
Stud Sheep and Fleece Competitions	3	-
Horse Rings	8	-

Rutherglen Agricultural Society Incorporated

(Affiliated with N.E.S.S.A and V.A.S LTD)

OFFICE BEARERS

President: Mr Greg Lumby
Senior Vice President: Mr James Baker
Junior Vice President: Mr John Terrill
Wine Show Chair: Mr Chris Pfeiffer

Secretary: Ms Tamara Hindle
Treasurer: Ms Cheryl Bryant

Ag Show Co-ordinator: Mrs Kaylene Lumby

Contact Details

PO Box 106, RUTHERGLEN VIC 3685
Phone: 02 6032 8044
Ag Show Coordinator: M: 0400805437

Email: wineagshow@westnet.com.au
Web: www.rutherglenwineshow.com.au

2023 COUNCIL

J Hollier, S Killeen, L Lumby, B Ryan, A. Schmidt, T Stanton & J Williams
G. Lumby, K. O'Keefe, C. Pfeiffer, J. Baker & J Terrill
M. Campbell, R. Briggs, T. O'Donoghue, R Potter & A Smith

2023 AG SHOW COMMITTEE

A Giason, A Welsh, B Ryan, G Lumby, H Williams, J Hollier, K Lumby, K Williams,
K Briggs, L Jones, L Lumby, R Jamieson, S Gilmour, T Stanton

Agricultural Society President's Welcome:

The Rutherglen Ag Society were determined for the show to continue again this year, being the *133rd Annual Show* and the only Ag Show within Indigo Shire - a tradition we are happy to continue.

After the success of last year's show, all be it after wet weather played its part, the Ag Society will again be making **gate entry to the show free to all** who attend. We are hoping this will allow a lot more people to again attend the show and enjoy the displays and competitions on offer.

Earlier this year the Ag Society held a couple of community meetings with the aim of recruiting some new volunteers and committee members to help organize and run the Ag Show in 2023 and beyond. These meetings were very successful, and many new faces are now working hard to see that events and competitions both outside and in the pavilion will now return to the program as in previous years.

Sara Love has enormous experience in the horse industry and has come on board to run the horse program for us this year. This will be a great spectacle on the main arena as in the past. This year also sees the return of the Stud Sheep section and Stud Cattle as a display. The schools cattle handling and judging will be a highlight as it was last year.
All the Pavilion Classes are back this year, with a few changes and inclusions to make it as big as ever.

We have an old favourite back again, being the *Morris Wines Woodchop* competition, with more classes added in for your enjoyment.

Of course, we couldn't provide the entertainment that we do without tremendous support from the many businesses and individuals within our community, and once again we thank our **Major sponsor "O'Connors Case IH"** for their valuable contribution.

Have a great day!

Greg Lumby
President, Rutherglen Ag Society Inc
E: aldinga@activ8.net.au M: 0427357235

GENERAL SHOW REGULATIONS

1. General entries must be made on the relevant entry form and delivered to the Show Secretary at the Henderson Pavilion, Rutherglen by 6pm on Friday 13 OCTOBER 2023; **however earlier entries are encouraged**. Each exhibitor will be given a sticker which must be attached to each exhibit to ensure exhibits are placed into their correct Section and Class.
2. All pavilion exhibits, (except where otherwise specified) must be delivered to the Henderson Pavilion by the time stated in Pavilion Conditions. This regulation will be strictly enforced.
3. All Outside Exhibitors must restrict their activities to the area allotted as per Ground Space Application. Society regulations require that all Ground fees **MUST** be paid prior to Show Day.
4. The judges have the power to withhold any prize if they deem the Exhibit unworthy or give a lesser prize; or they may award Special Prizes in the form of Certificates of Merit, for exhibits which they may deem worthy.
5. All Articles shown must be the Bona Fide property of the exhibitor (except in Flowers for decorative arrangements).
6. In cases of a difference of opinion between judges, the services of an independent judge will be used.
7. Society Membership for 2023/24 is \$20 – with free Admission to Showgrounds for everyone.
8. No person except those considered necessary will be allowed to accompany exhibits and/or exhibitors at judging.
9. Any person being an exhibitor will not be allowed to be present during the adjudication of the Judges (excepting Livestock and in any section where the Judge deems it necessary) and any exhibitor remaining near the Judge will forfeit all right to a prize in that Section.
10. No person shall be permitted to exhibit in any classes for which he or she is acting as a Steward.
11. The Society will not in any circumstances hold itself responsible for any loss or mis-delivery of any exhibit at the Society's exhibition or any damage thereto.
12. Any person insulting or interfering with the Judges during the Show will be subject to removal from the grounds and the prizes awarded to him/her forfeited. Members of the Society so aggressing will be liable to expulsion.
13. No appeal, against the decision of the Judges will be entertained unless the same is made in writing and lodged with the Show Secretary before 6 o'clock on the day of the Show and a deposit of \$10 lodged, which will be forfeited if the Committee considers the appeal to be frivolous.
14. In the event of any protest being received it will be considered by the Committee at the next meeting after the Show and its decision shall be final.
15. No exhibit shall be allowed to be removed before 4.00pm on Show Day and will, in every respect, be considered the property of the Society until that time.
16. Only Prize cards won at this Show will be allowed to be placed on exhibits. Your prize card is your pay voucher. Children under 16 years of age must be accompanied by a parent or guardian. All prize money must be checked before exhibitor leaves the showground as no appeal will be considered after Show Day.
17. Prizemoney not collected on Show Day may be forfeited.
18. All individual Exhibitors must provide a completed and signed Entry form **ONE PERSON ONLY** per entry form.
19. Any infringement of these rules will disqualify exhibitors from taking prizes awarded to them.
20. This Society is affiliated with the North Eastern Agricultural Societies Association and V.A.S Ltd. It has been determined by these bodies that in the event of any exhibitor being offensive to any Judge, their entry will be declined by all Societies affiliated with the Association and any prize money won by them shall be withheld. Other penalties imposed by any Society in the association will be upheld and endorsed by all affiliated members.
21. Owners entering livestock do so entirely at their own risk and it is a condition of entry in any event that no liability of any kind attaches to the Society, the Committee, Officials and Members in any respect whatsoever. The Society will not be responsible for any accident that may be caused through or by any exhibit and it shall be a condition of entry that each exhibitor shall hold the Society harmless and indemnify it against any legal proceedings arising from such an accident.
22. In Classes where there are prizes and trophies for "Most Successful Exhibitor" points will be allotted as follows; First – 4 points, Second – 2 points, Third or Highly Commended- 1 point. In the event of a tie, the count back is to apply. Exhibitors must have received at least 2 prizes in a Section to be eligible for Most Successful Exhibitor for that Section.



Chris and Fiona Bourke

Ph: 02 6032 8225 or 02 6032 7222 | M: 0417 688 752

E: admin@completebodycraft.com.au | info@completebodycraft.com.au |

fiona@completebodycraft.com.au | chris@completebodycraft.com.au

W: completebodycraft.com.au

70-86 Fortune Street (Springhurst Road) | PO Box 227

Rutherglen Victoria 3685

FROM the smallest car through to the biggest truck, & everything in between

– Complete Body Craft is your 'go to' team

LOCATED IN RUTHERGLEN, NORTH EAST VICTORIA

Complete Body Craft has earned an enviable reputation for service and quality making them one of Victoria's premier car and truck repair facilities.

Customers choose Complete Body Craft for their commitment to providing outstanding customer service, the very latest in repair technologies, the fact that they are the recommended repairer for all leading insurance companies; and of course, superior results!

CLOSING TIME FOR ALL PAVILION ENTRIES

Friday 13th OCTOBER 2023 @ 6 PM

(UNLESS STATED OTHERWISE IN THE SHOW SCHEDULE)

PLEASE CAREFULLY READ 'PAVILION CONDITIONS' & 'REGULATIONS'.

YOU SHOULD ALSO ENSURE YOU ABIDE BY CONDITIONS THAT APPLY TO INDIVIDUAL SECTIONS AND CLASS.

NO LATE ENTRIES WILL BE ACCEPTED

PLEASE NOTE: In all Classes, NO Exhibitor is allowed to remove an exhibit OR part of an exhibit from the exhibition until after 4.00pm on Show Day.

They must contact the Steward in attendance before removing their entry.

PAVILION CONDITIONS

All Pavilion exhibits apart from Eggs, Fruit & Vegetables, Flowers, Decorative Flower Arrangements and Pot Plants are judged prior to Show Day and must be in the Henderson Pavilion on the day specified below.

SECTION	TIME FOR DELIVERY
(6) Eggs, (C) Fruit and Vegetables, (D) Cut Flowers, (E) Decorative Arrangements and (F) Pot Plants	BETWEEN 8am & 9am ON SHOW DAY. Entries may be delivered on Friday (2–5 pm) or Saturday (9am – 4pm) if desired.
(6) Poultry	Must be penned by 9am on SHOW DAY
(K) Baking & Preserves and (J) Junior School Cookery	BETWEEN 2-5pm Friday and 8am – 9.30am ON THE SATURDAY BEFORE SHOW DAY.
(O) High School Homecrafts, Schools Display & Poster Competition (J) Junior School Exhibits, (M) Group Exhibit, (N) Open Arts & Crafts, (O) High School Art/Wood/Metal, (R) Open Needlework, including VAS Classes	BETWEEN 2pm & 5pm ON THE FRIDAY BEFORE SHOW DAY but may be delivered prior to this
(S) Photography	Secretary's Office Henderson Pavilion on Saturday 14th October between 9am – 12pm , so that photos can be judged prior to Show Day.
(1) Farm Produce	BETWEEN 8am & 9am ON SHOW DAY

- Entry fee as stated. JUNIOR classes are FREE entry.
- Entry fees are payable on lodgement of entry form unless otherwise arranged with the Show Secretary.
- If no Exhibitor has been awarded at least two prizes in a Section, then no Most Successful Exhibitor prize will be given.
- First Prize will be \$4.00; Second Prize will be \$2.00 unless otherwise stated.
Your Prize Card is your Voucher for prize money, which will be available after 4.00pm on Show Day.
- Children exhibiting on Show Day MUST be in the Year or Grade referred to in the Class heading.
- Return postage for Exhibits is paid for by the Exhibitor.
- All Exhibits are to be the bona fide work of the Exhibitor. The maker's name must not be visible.
- No one article can be entered in two sections.
- Entries must be lodged at the Show Office and the Exhibit ticket supplied must be attached to the Exhibit.
- Novice Sections are limited to persons who have not won a first prize for an Open or Novice Class in that Section at previous Rutherglen Shows.
- Exhibitors may not enter both Novice and Open Classes in the same Section.
- All Exhibits must be clean, produced in the previous 12 months, and must not have been previously exhibited at any Rutherglen Show.
- In all Classes, NO Exhibitor is allowed to remove an exhibit OR part of an exhibit from the exhibition before 4.00pm on Show Day when they **must contact the Steward** in attendance.



Cann's Bus Management - for all your transport needs...

*Bus & Coach Charter
*School Excursions

*Group Winery Tours
*Conferences *Weddings

*Sporting Events
*Mini Bus Hire/Drive

PH: 02 6033 2249

Mobile: 0458 275 657

email: admin@cannsbuslines.com.au

30-32 Poseidon Road, Corowa NSW 2646

A Dineen Group Company

Cann's Bus Lines are proud contributors towards this year's Facepainting and Children's entertainment activities.

Rutherglen Agricultural Society would like to thank Cann's for their support.



PICKLEBALL has come to town – social games played indoors at Henderson Pavilion.

Pickleball is the fastest growing sport no one has ever heard of. A mix of tennis, badminton, and table tennis it's a quick paced game that's lots of fun for all ages.

Newcomers welcome to come and try.

After the Wine and Ag Shows, regular sessions will be scheduled and advertised on Facebook pages for



Rutherglen Pickleball

If you want to play, let us know by leaving your name and contact details on the Pickleball FB page.

For more information call Geoff on 0424 161 488

PAVILION EXHIBITS

COME ON GUYS – THIS IS YOUR YEAR!!
Don't be afraid - pit your skills against the
girls - You can enter ANY of the
competitions in the Pavilion



REFER TO PAVILION CONDITIONS FOR TIME TO DELIVER EXHIBITS FOR JUDGING IN EACH SECTION

SECTION C – FRUIT AND VEGETABLES

(Must be grown by Exhibitor)

1st Prize - \$4. 2nd Prize - \$2 (unless otherwise stated)

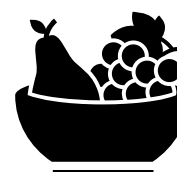
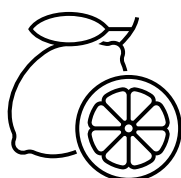
Entry FREE

All Exhibits must be at the Henderson Pavilion between 8am & 9am on Show Day.

- Judging Commences at 9.30am
- Your prize card is your prize voucher – prize money available after 4.00pm on Show Day.
- Refer to Pavilion Conditions.
- No exhibit is to be removed before 4.00pm and must be arranged with a Steward.
- Definitions: NND – Not necessarily Different Cultivars
SS – Staged singly; cultivar (Cultivated) variety.



CLASS	CLASS
1. One Lettuce, any variety	2. Plate of Ten Peas
3. Three Root Vegetables NND	4. Three Onions NND
5. Five Stalks of Rhubarb	6. Five Stalks of Silver Beet
7. Ten Broad Beans	8. Container of herbs, minimum of 3 varieties, all herbs to be named
9. Basket or tray of garden produce minimum of 8 varieties. NO Eggs	10. Any other fruit(s) or vegetable(s) not listed
11. Three Citrus NND	
Most Successful Exhibitor - Classes 1 to 11- Sponsored by Lilliput Ag	



Fruit & Vegetables - Junior Section

Entry FREE

CLASS	
12. <u>FOR SCHOOLS</u> – Produce from your School Garden	

SECTION D - CUT FLOWERS

(Must be grown by Exhibitor)

1st Prize - \$4. 2nd Prize - \$2 (unless otherwise stated)

Entry FREE

All Exhibits must be at the Henderson Pavilion between 8am & 9am on Show Day.

- All flowers must have exhibit tickets attached (refer to Regulation 1)
- Judging Commences at 9.30am
- Your prize card is your prize voucher – prize money available after 4.00pm on Show Day.
- Unless stated otherwise, cut flowers are to be staged in a Garden Club holder (some are available at the pavilion) or a bottle.
- A Container must have not less than 5 blooms or 5 cuts unless stated otherwise.
- Please name varieties of rose if known.
- Definitions:
 - NND – Not necessarily distinct variety
 - SS – Stage singly
 - Cultivar – (cultivated) variety.
 - ANS – Any number of stems
 - Distinct – Different
- No exhibit is to be removed before 4.00pm and must be arranged with a Steward.
- Refer to Pavilion Conditions.



Stewards – Rutherglen Garden Club Members

CLASS	CLASS
1. Six cut flowers, different varieties, SS (Trees & shrubs not allowed)	2. Three Cuts of Bearded Iris, different colours SS
3. One cut of Iris	4. Container of Dutch Iris, ANS but not less than 5 stems
5. One bloom of Iris	6. Three stems of Pelargonium (or Geranium), different colours, one container
7. Container of Iris, ANS but not less than 5 stems	8. Container of Poppies
9. One stem of Ivy-leaved Pelargonium.	10. One large flowered (Hybrid Tea) Rose
11. One cut of Cluster Flowered (Floribunda) Rose	12. Three phases of a Rose
13. Three large flowered (Hybrid Tea) Roses, different varieties, SS	14. Six Sweet Peas, NND, one container
15. Three Sweet Peas, different colours, one container	16. Container of mixed flowers (excluding trees or shrubs), any number of cuts
17. One cut of Flowering Shrub (excluding Australian Flora), SS, length of cut to be no more than 45cm above the top of the bottle	18. One cut of Flowering Australian Flora, SS, length of cut to be not more than 45cm above the top of bottle
19. Three cuts of foliage – SS	20. Container of Daisies
21. Any cut of flower not listed in schedule	22. Three Petunias, different colours, one container
Most Successful Exhibitor – Classes 1 to 22 - \$20 Voucher – Border Bearings Champion Cut Flower Exhibit – \$25 Voucher - “The Other Place”, Rutherglen	



SECTION E – DECORATIVE ARRANGEMENTS

(Flowers need not be grown by the Exhibitor - Foliage Allowed)

1st Prize - \$4. 2nd Prize - \$2 (unless otherwise stated)

Entry FREE

All Exhibits must be at the Henderson Pavilion between 8am & 9am on Show Day.

- Judging Commences at 9.30am
- Your prize card is your prize voucher – prize money available after 4.00pm on Show Day.
- Any embellishment allowed unless otherwise specified.
- Wiring – any natural foliage or horticultural allowed.
- Arrangements must contain plant matter.
- No exhibit is to be removed before 4.00pm and must be arranged with a Steward.
- Refer to Pavilion Conditions



Stewards – Rutherglen Garden Club Members

CLASS		CLASS	
1.	Foliage with one flower	2.	Arrangement in a Bird Cage
Champion Ribbon & Prize Sponsored by Lilliput Ag			
NOVICE SECTION			
3.	Arrangement in a teapot	4.	Arrangement using Candles
Champion Ribbon & Prize Sponsored by Lilliput Ag			
13 YEARS AND UNDER			
5.	An Arrangement using feathers	6.	Arrangement in One Colour
Champion Ribbon & Prize Sponsored by Lilliput Ag			
16 YEARS AND UNDER			
7.	Sporting theme arrangement	8.	Basket of flowers
Champion Ribbon & Prize Sponsored by Lilliput Ag			



Poachers Paradise Hotel

Est 1860

Your local PUB in Rutherglen

120 Main Street

02 6032 9502

Poachersparadise2023@gmail.com



- . Bar Open 7 days from 11am till late
- . Bistro open Tuesday till Sunday
- *Lunch from 12pm
- *Dinner from 6pm
- . Sports Bar
- . TAB
- . Indoor & Outdoor Dining
- . Function Room with Balcony



The Start Bit

Garlic Bread	\$8.00
Add Cheese	\$2.00
Add Bacon	\$2.00
Olives	\$8.00
Marinated Olives served warm	
Duck Spring Rolls	\$10.00
3 x house-made spring rolls served on rocket & red onion salad with chilli sauce	
Add Roll	\$3.00
Salt & Pepper Calamari	\$12.00
House-made seasoning, rocket, red onion, crispy noodles, aioli & lemon wedge	
Bruschetta	\$12.00
Bread, tomato, red onion, garlic, olive oil & balsamic dressing	
Add Feta	\$2.00
Honey Baked Camembert	\$17.00
Wheel of camembert, baked and served with honey, walnuts and bread	
Cheese Croquette	\$10.00
3 x cheese croquettes served with Sriracha mayo	
Add croquette	\$3
Bread	\$8.00
Sour dough served with olive oil and balsamic	
Entrée Share Platter	\$17.00
Garlic bread, duck spring roll, bruschetta and marinated olives	

The Side Bit

Bowl of Chips	\$8.00
Bowl of Wedges	\$10.00
Onion Rings	\$8.00
Garden Salad	\$8.00
Seasonal Veg	\$10.00

The Saucy Bit

Add to any meal for \$2.00 each

Brown Gravy	Blue Cheese Butter
Onion Gravy	Aoli
Mushroom Gravy	Sriracha Mayo
Pepper Gravy	Chilli Sauce
Garlic Butter	BBQ Sauce

The Middle Bit

Scotch	\$37.00
250g scotch, duck fat potatoes, asparagus, cherry tomatoes	
Add Prawns	\$7.00
Porterhouse	\$35.00
250g porterhouse, duck fat potatoes, asparagus, cherry tomatoes	
Add Prawns	\$7.00
Bangers N Mash	\$25.00
Beef sausages served with creamy mash & seasonal veg with onion gravy	
Poachers Burger	\$25.00
House-made beef burger on a brioche bun with bacon, caramelised onion, tomato, beetroot, cheese, mayo & BBQ sauce, served with chips	
Poachers Parm	\$29.00
Hand crumbed chicken breast, napoli, ham & cheese, served with chips & salad or seasonal veg	
Chicken Snitty	\$22.00
Hand crumbed chicken breast served with chips & salad or seasonal veg	
Salt N Pepper Calamari	\$22.00
House-made seasoning, rocket, red onion, crispy noodles, aioli & lemon wedge	
Garlic Prawns	\$30.00
Chef's special garlic cream with leek & spring onions, prawns, chilli & served on rice	
Greek Salad	\$25.00
Sliced cucumbers, tomatoes, green capsicum, red onion, olives, feta cheese & dressing	
add Calamari	\$7
add Chicken	\$7
add Prawns	\$7

Fish O' the Day

Check specials board -
Fish served with chips & salad, tartare sauce & lemon wedge

Pasta O' the Day

Check specials board for this months special

The End Bit

Chocolate Brownie	\$12.00
Lemon Panna cotta	\$12.00
Affogato	\$15.00
Mille Feuille	\$10.00

SECTION F - POT PLANTS

(Must be growing in a Pot or Suitable container - Container not judged.)

1st Prize - \$4. 2nd Prize - \$2 (unless otherwise stated)

Entry FREE

All Exhibits must be at the Henderson Pavilion between 8am & 9am on Show Day.

- Judging Commences at 9.30am
- Your prize card is your prize voucher – prize money available after 4.00pm on Show Day.
- No exhibit is to be removed before 4.00pm and must be arranged with a Steward.
- Refer to Pavilion Conditions.



CLASS	CLASS
1. A Cactus or Cacti 27cm	2. A Flowering pot plant of one variety
3. A Succulent or succulents 27cm	4. Container of Fern
5. Plant or plants in an unusual container	6. A Terrarium
7. A Foliage plant	
Champion Exhibit Most Successful Exhibitor – Class 1 to 7	



POTTS & SCHNELLE

Chartered Accountants & Financial Planners
Business, Taxation & Specialist Services

75 MAIN STREET, RUTHERGLEN

Ph: 02 6032 7522

25 Queen Street, Corowa

Ph: 02 6033 2233

Email: myaccountant@potts-schnelle.com.au

SECTION J - JUNIOR SCHOOLS

KINDER AND PRIMARY SCHOOLS

MAKE IT, BAKE IT, GROW IT, SHOW IT

1st Prize - \$4. 2nd Prize - \$2 (unless otherwise stated)

Entry FREE

All Exhibits to be at the Henderson Pavilion between 2-5pm Friday & Baking on Saturday 8am-9.30am.

- Judging Commences at 11am on Saturday 21st.
- Only one entry per Exhibitor in any Class
- Your prize card is your prize voucher – prize money available after 4.00pm on Show Day.
- Packet Cake Mix NOT to be used unless Specified.
- Baking exhibit must not require refrigeration.
- All Baking exhibits should be covered with clear plastic bags (not plastic clingwrap - oven bags are ideal)
- Size of item unspecified unless stated.
- No exhibit is to be removed before 4.00pm and must be arranged with a Steward.
- Refer to Pavilion Conditions.



TO ENSURE IT IS CLEARLY VISIBLE PLEASE STICK THE EXHIBIT TICKET TO THE TOP OUTSIDE EDGE OF EXHIBIT.

CLASS	CLASS
<u>PRESCHOOL AND FOUNDATION</u>	
<i>MAKE IT</i>	
1. Exhibit made from Lego/Duplo – to be displayed on a solid wooden board or tray no larger than 30cm square.	2. Kit project with package to be displayed.
3. An article made from recycled materials.	4. Bracelet or necklace made from any object/s
<i>BAKE IT</i>	
5. A Figure made with Scone Dough and baked. (Figure must be no larger than 20x20cm and on a similar sized board or plate	6. Pin Wheels – Savoury or Sweet – 6 pieces
7. Four decorated Arrowroot biscuits, all edible.	
<i>GROW IT</i>	
8. Fruit/Veg Creation	9. Mandala Nature art
<i>SHOW IT</i>	
10. Decorated hat, fit for the Show!	11. My favourite piece of art, any medium.
12. A selfie that best shows your personality or what you love the most.	
Champion Ribbon – Classes 1 to 12 & Reserve Champion – Sponsored by The Hub Automotive	



CLASS	CLASS
YEARS 1 & 2	
<i>MAKE IT</i>	
13. Exhibit made from Lego/Duplo – to be displayed on a solid wooden board or tray no larger than 30cm square.	14. Kit project with package to be displayed
15. An article made from recycled materials	16. A name tag for your school bag – any medium and design
<i>BAKE IT</i>	
17. A Figure made with Scone Dough and baked. (Figure must be no larger than 20x20cm and on a similar sized board or plate	18. Pin Wheels – Savoury or Sweet – 6 pieces
19. Four decorated Arrowroot biscuits, all edible.	
<i>GROW IT</i>	
20. Fruit /Veg Creation	21. Mandala Nature art
<i>SHOW IT</i>	
22. Decorated hat, fit for the Show!	23. My favourite piece of art, any medium.
24. A Selfie that best shows your personality or what you love the most.	
Champion Ribbon – Classes 13-24 & Reserve Champion – Sponsored by The Hub Automotive	
CLASS	CLASS
YEARS 3 & 4	
<i>MAKE IT</i>	
25. Exhibit made from Lego/Technic Lego – to be displayed on a solid wooden board or tray no larger than 30cm square.	26. Kit project with package to be displayed.
27. An article made from recycled materials.	28. Item made from Polymer or Air-Dry Clay
<i>BAKE IT</i>	
29. A Figure made with Scone Dough and baked. (Figure must be no larger than 20x20cm and on a similar sized board or plate	30. Pin Wheels – Savoury or Sweet – 6 pieces
31. Four decorated Arrowroot biscuits, all edible	
<i>GROW IT</i>	
32. Fruit/Veg Creation	33. Mandala Nature art
<i>SHOW IT</i>	
34. Decorated hat, fit for the Show!	35. My favourite piece of art, any medium.
36. Project of any type	37. 4 photos that best tell your story – presented in a format of choice.
Champion Ribbon – Classes 25-37 & Reserve Champion – Sponsored by The Hub Automotive	



CLASS	CLASS
YEARS 5 & 6	
<i>MAKE IT</i>	
38. Exhibit made from Lego/Technic Lego – to be displayed on a solid wooden board or tray no larger than 30cm square.	39. Kit project with package to be displayed.
40. An article made from recycled materials.	41. Item made from Polymer or Air-Dry Clay
<i>BAKE IT</i>	
42. A Figure made with Scone Dough and baked. (Figure must be no larger than 20x20cm and on a similar sized board or plate	43. Pin Wheels – Savoury or Sweet – 6 pieces
44. Four decorated Arrowroot biscuits, all edible	
<i>GROW IT</i>	
45. Fruit/Veg Creation	46. Mandala made from objects found in nature
<i>SHOW IT</i>	
47. Decorated hat, fit for the Show!	48. My favourite piece of art, any medium
49. Project of any type	50. 4 photos that best tell your story – presented in a format of choice.
Champion Ribbon – Classes 38-50	
Reserve Champion	
All Sponsored by Border Bearings Corowa	
Supreme Exhibit Overall – Classes 1 – 50	



Rutherglen Annual Show Committee thanks Peter and Rose of Border Bearings Corowa for their generous support in 2023.

SECTION J - POSTER COMPETITION

Foundation and Classes 1 – 6 Age Groups

Age Group Prizes - 1st Prize \$4. 2nd Prize \$2 (unless otherwise stated)

Entry FREE

- Entries **MUST** be available from Schools for collection on **Friday 20th October** or earlier by arrangement or can be delivered to the Henderson Pavilion between 2pm & 5pm Friday.
- Note: Entries received late will potentially not be able to be exhibited.
- **Posters to be no larger than A4.**

CLASS
51. <u>Poster to illustrate aspects of Rutherglen Agricultural Show.</u> Primary School aged children to enter. Name, Age, School Name and Year must be marked on the Entry Form and on the back of the exhibit.
Champion (includes all Grades) - Voucher for \$15 Reserve Champion (includes all Grades) – Voucher for \$10 (Note: Prizes are for the overall winners <u>only</u>) Donated by the family of the Late Mr & Mrs A G Williams

KINDERGARTEN/SCHOOLS DISPLAY

Entry FREE

Please advise Kay Lumby by **WEDNESDAY 18th October** of your intention to enter so the best allocation of space available can be made. M: 0400 805 437 Email: wineagshow@westnet.com.au

- Areas to be no more than 1.5 metre frontage (Length) - may be negotiated depending on number of exhibitors.
- All Display materials including backdrop or backing sheets to be supplied by the Exhibitor.
- Exhibit must be staged by 5 pm Friday 20th October.
- Any valuables to be removed after 4.00pm on Show Day.

CLASS
52. Display of Choice - demonstrating some aspect of School program/s

School with the best selection of Exhibits to receive a \$50 voucher being for Art supplies, sponsored by Rutherglen News and Lotto.

Rutherglen News & Lotto
128-130 Main Street, Rutherglen
(02) 6032 9517
rutherglennewsandlotto@gmail.com

Complete range of stationery, greeting cards, toys, giftware, souvenirs, and Lotto.



Rutherglen Agricultural Society would like to thank



Baxter's Concrete Pty Ltd for their support of our show in 2023.
P: 02 6056 4622
E: admin@baxtergroup.com.au
2 Moloney Drive Wodonga 3690

SECTION K – BAKING AND PRESERVES - OPEN

MEN'S CAKE COMPETITION (FOR MEN ONLY - 18 YRS & OVER) ENTRY FEE \$10

A CAKE OF YOUR CHOICE – baked and decorated.

Conditions of Entry:

- Cake **must be** at the Henderson Pavilion between 8am & 9.30am on Saturday prior to Show
- Judging commences at 11.30am on Saturday 21st.
- Entry is restricted to men only, 18 years or older.
- Cake must be made in a domestic kitchen by the entrant with no female assistance.
- No commercial cake mixes to be used.
- All proceeds from entry in this special competition will be donated to **Gateway Health**.

For any further information regarding this special event contact the Show Office on (02) 6032 8044.

\$50 Voucher & “bragging rights” to the holder of the Golden Whisk.

1st & 2nd Sponsored by Caffeine N Machine

Main Street Rutherglen

www.caffeinenmachine.com.au



BOORHAMAN LADIES BAKE-OFF

Conditions of Entry:

- Cake **must be** at the Henderson Pavilion between 8am & 9.30am on Saturday prior to Show.
- Judging commences at 11.30am on Saturday 21st.
- Entry to this Special Class is limited by address and age, due to its novelty status.
- Cake must be made in a domestic kitchen by the entrant.
- No commercial cake mixes to be used.
- **Plates must be solid and of an appropriate size.**
- Winner presented with a **Perpetual Trophy**
& **Wash, Cut & Blow-wave Voucher** from **Jack And The Fox**

jackandthefox.com.au

**116 Main Street
Rutherglen**



****PLEASE TAKE NOTE OF CLOSING DATE FOR ENTRIES****

FRIDAY 13TH OCTOBER 2023 AT 6PM

BAKING – Open to 13 Years and above

**1st & 2nd Prize and Highly Commended Cards awarded.
(Prize money awarded as stated.)**

Entry FREE

All Exhibits to be at the Henderson Pavilion between Saturday 8am-9.30am, or 2-5pm Friday.

- Judging Commences at 11.30am on Saturday 21st.
- Only one entry per Exhibitor in any Class
- Your prize card is your prize voucher – prize money available after 4.00pm on Show Day.
- Packet Cake Mix NOT to be used unless Specified.
- Baking exhibit must not require refrigeration.
- All Baking exhibits should be covered with clear plastic bags (not plastic clingwrap - oven bags are ideal)
- **Plates must be solid and of an appropriate size.**
- Size of item unspecified unless stated.
- No exhibit is to be removed before 4.00pm and must be arranged with a Steward.
- Refer to Pavilion Conditions.



CLASS	CLASS
<i>BAKING – OPEN</i>	
1. Fruit Cake	2. Classic Iced Chocolate Cake
3. Gluten Free Cake – iced	4. Gluten Free Biscuits (4 pieces)
5. Non-Gluten Free Biscuits (4 pieces)	6. Sponge Sandwich – uniced, plain, no filling
7. Plain Scones – 5cm cutter size (4 scones)	8. Decorated Cake
9. Novelty Cake	
<i>BAKING – NOVICE</i>	
10. Fruit Cake	11. Classic Iced Chocolate Cake
12. Gluten Free Cake – iced	13. Gluten Free Biscuits (4 pieces)
14. Non-Gluten Free Biscuits (4 pieces)	15. Sponge Sandwich – uniced, plain, no filling
16. Plain Scones – 5cm cutter size (4 scones)	17. Decorated Cake
18. Novelty Cake	
Best in Show – Baking (1st & 2nd Prize): Sponsored by GRACE. bar + eatery.	

FEATURE BAKING SECTION

RUTHERGLEN'S BEST CARROT CAKE WITH A TWIST


Carrot Cake – Open Section

Recipe: Bring your best recipe forward for this challenge

- Baked by you,
- Plain, iced, or un-iced and/or decorated.




1st & 2nd Prizes: Sponsored by Valentines Artisan Sourdough Bakers

CLASS		CLASS		
<i>BREAD – MACHINE OR HAND-MADE</i>				
19. Yeasted (using commercial yeast)		20. Sourdough		
21. Specialty, such as fruit, seeded		22. Gluten Free		
Best in Show – Bread (1st Prize): Sponsored by Woodstock Flour – Flour Hamper				

PRESERVES

- Judges have the right to open Exhibits.
- All Entries are to have CLEAR REMOVABLE COVERS – please remove wax or screw tops & replace with clear removable covers.
- All Entries are to be clearly labelled with the variety.

CLASS	CLASS
JAMS/JELLIES	
23. Two Jars Jam, two distinct varieties	24. Apricot Jam, 1 jar
25. Grapefruit Marmalade, household type, 1 jar	26. Orange Marmalade, 1 jar
27. Marmalade, mixed fruits, 1 jar	28. Any other Marmalade, not provided for, 1 jar
29. Plum Jam, 1 jar	30. Blackberry Jam, 1 jar
31. Strawberry Jam, 1 jar	32. Raspberry Jam, 1 jar
33. Any Other Jam, not provided for, 1 jar	34. Jelly, 1 jar
35. Lemon Butter, 1 jar	36. Butter, Any Other, 1 jar

CLASS	CLASS	
SAUCES/PICKLES		
37. Chutney, Tomato, 1 jar	38. Chutney, Any variety, 1 jar	
39. Pickled Vegetables, 1 jar	40. Green Tomato Pickles, 1 jar	
41. Relish, 1 jar	42. Sauce, Plum, 1 bottle	
43. Sauce, Tomato, 1 bottle	44. Sauce, Any Other, 1 bottle	
45. Any Other Pickle, 1 jar		
Best in Show – Sauces/Pickles (1 st Prize): Sponsored by Savoy Truffle Co – Preserve Hamper		

CLASS	CLASS
<i>PROVISIONS</i>	
46. Fruit Cordial, 1 bottle	47. Vinegar, Flavoured, 1 bottle
48. Homemade Mayonnaise, 1 jar	49. Preserved Fruit or Vegetable, 1 jar
50. 1 Container of Paste, Any Variety	
Best in Show – Provisions (1st Prize): Sponsored by Yarramanda Farm – Preserve Hamper	

Preserves can be delivered to Henderson Pavilion on Friday 20th October between 2-5pm or Saturday 21st October between 8-9.30am.

Judging will take place on Saturday 21st at 11.30am

Best Overall in Show Prize: Sponsored by **Rutherglen IGA**



SECTION S – PHOTOGRAPHY – OPEN & NOVICE

1st Prize - \$6. 2nd Prize - \$3. (unless otherwise stated)

Entry FREE

These classes are open to AMATEURS ONLY.

All Exhibits in this section are to be at the Henderson Pavilion between **9am-12pm on Saturday 14th October** to allow judging to take place prior to the Show.

- All prints are to be mounted – **Mounting Boards will be supplied** by the Society and Exhibitors must mount their own prints – please use clear 3M type tape to prevent damage to frames.
- Place Exhibitors ticket **on the back of the photo** – NOT on the mounting.
- Mounting Boards must be returned when the exhibits are collected.
- Prints must be 15cm x 10cm.
- All photographs to be taken within the last 12 months.
- Your prize card is your prize voucher – prize money is available after 4.00pm on Show Day.
- No exhibit is to be removed before 4.00pm and must be arranged with a Steward.
- Refer to Pavilion Conditions.
- All exhibits, except for Experimental Photography/AI class, are to be the bona fide work of the Exhibitor – NO AI.

CLASS	CLASS
<i>OPEN</i> – All classes are Colour or Black & White	
1. Portrait People/person	2. Animal – Primary Subject
3. Portrait Bird	4. Local District Architecture/Construction
5. Rutherglen & District in Flood	6. Experimental Photography, includes AI
7. Tony Reeckman Memorial Prize – “Life on the Land”	
In Memory of Tony Reeckman – Photographer and Farmer Trophy & Prize money sponsored by the Reeckman Family.	
<i>NOVICE</i> – All classes are Colour or Black & White	
8. Portrait People/person	9. Animal – Primary Subject
10. Portrait Bird	11. Local District Architecture/Construction
12. Rutherglen & District in Flood	13. Experimental Photography, includes AI
Champion, Reserve Champion & Most Successful Exhibitor for both Open & Novice	
Note: 2024 will be 150 years of the Wine Bottle, so get your photos ready for 2024!	

SECTION M – ORGANISATION/GROUP EXHIBITS

1st Prize - \$4. 2nd Prize - \$2 (unless otherwise stated)

Entry FREE

Calling all members of Indigo North, Men & She Sheds, Rutherglen Crafters, Corowa Creations, Lions & Rotary Members, Scout Groups, and others – your time to shine.

All Exhibits in this section **must be** at the Henderson Pavilion between 2-5pm on Friday 20th October.

- Judging Commences at 9am on Saturday 21st.
- Your prize card is your prize voucher – prize money available after 4.00pm on Show Day.
- No exhibit is to be removed before 4.00pm and must be arranged with a Steward.
- Refer to Pavilion Conditions.
- A List of competition items to be supplied for each entry (exhibitor).

CLASS
1. Cake – iced with decorations permitted.
2. A Wooden article
3. Garden Art – metalwork less than 90cm in height.
4. Patchwork article – 1m x 1m – hand or machine sewed.
5. Christmas Decoration
Champion & Reserve Champion Ribbons Sponsored by Border Bearings Corowa

SECTION N – ARTS/CRAFTS – OPEN

1st Prize - \$4. 2nd Prize - \$2 (unless otherwise stated)

Entry FREE

All Exhibits in this section **must be** at the Henderson Pavilion between 2-5pm on Friday 20th October.

- Judging Commences at 9am on Saturday 21st.
- Your prize card is your prize voucher – prize money available after 4.00pm on Show Day.
- No exhibit is to be removed before 4.00pm and must be arranged with a Steward.
- All Exhibits are to be the bona fide work of the Exhibitor. The maker's name must not be visible.
- No one article can be entered in two sections.
- Refer to Pavilion Conditions.

CLASS
<i>DRAWINGS, PAINTINGS, COLLAGE</i>
1. Piece of Art, any medium
<i>MILLINERY</i>
2. Formal Headwear – Melbourne Cup
3. Spring Millinery – any method or material
4. Barbie Theme – pretty with pink
Champion & Reserve Champion Ribbons Sponsored by Border Bearings Corowa



SECTION O – HIGH SCHOOL HOMECRAFTS

1st Prize - \$4. 2nd - \$2 (unless otherwise stated)

Entry FREE

All Exhibits in this Section **must be** at the Henderson Pavilion between 2-5pm Friday 20th October.

- Judging commences at 9am on Saturday 21st.
- For Exhibitors residing within a 50km radius of the Rutherglen Post Office.
- If the makers name (or any other name) is on the exhibit this must be covered.
- Components which are essential for the Exhibit but are not of the predominate material specified, are allowed.
- Your prize card is your prize voucher – prize money is available after 4.00pm on Show Day.
- After 5.30pm the work is no longer the responsibility of the Society.
- No exhibit is to be removed before 4.00pm and must be arranged with a Steward.
- Refer to Pavilion Conditions.

THE EXHIBITOR MUST ON SHOW DAY BE IN THE YEAR REFERRED TO IN THE CLASS HEADING

CLASS	CLASS
YEAR 7	
1. Design a cover for iPhone or iPad	2. Construction with Lego – My Dream Vehicle
3. Scarf or beanie	4. Design a T-Shirt for Rutherglen Rumble 2024
YEAR 8	
5. Design a cover for iPhone or iPad	6. Construction with Lego – My Dream Vehicle
7. Scarf or beanie	8. Design a T-Shirt for Rutherglen Rumble 2024
YEAR 9	
9. Design a cover for iPhone or iPad	10. Construction with Lego – My Dream Vehicle
11. Scarf or beanie	12. Design a T-Shirt for Rutherglen Rumble 2024
YEAR 10	
13. Design a cover for iPhone or iPad	14. Construction with Lego – My Dream Vehicle
15. Scarf or beanie	16. Design a T-Shirt for Rutherglen Rumble 2024
Champion & Reserve Champion Ribbons for each Year Level Most Successful Exhibitor for each Year Level	
Sponsored by The Rutherglen Hardware	



**The
Rutherglen
Hardware**



SECTION O – HIGH SCHOOL ART, WOOD & METAL

1st Prize - \$4. 2nd - \$2 (unless otherwise stated)

Entry FREE

All Exhibits in this Section **must be** at the Henderson Pavilion between 2-5pm Friday 20th October.

- Judging commences at 9am on Saturday 21st.
- For Exhibitors residing within a 50km radius of the Rutherglen Post Office.
- Artwork may be mounted on coloured card but not framed.
- If the makers name (or any other name) is on the exhibit this must be covered.
- Components which are essential for the Exhibit but are not of the predominate material specified, are allowed.
- Your prize card is your prize voucher – prize money is available after 4.00pm on Show Day.
- After 5.30pm the work is no longer the responsibility of the Society.
- No exhibit is to be removed before 4.00pm and must be arranged with a Steward.
- Refer to Pavilion Conditions.

THE EXHIBITOR MUST ON SHOW DAY BE IN THE YEAR REFERRED TO IN THE CLASS HEADING.

Opening Hours
 Mon - Fri 9am-5pm
 Saturday 9am-2pm
 Sunday 10am-2pm

Address
 2 Romet Rd, West Wodonga
 VIC 3690

info@leathernthread.com.au



CLASS	CLASS
<u>YEAR 7</u>	
1. Metalwork (specify if in kit form)	2. Woodwork
3. Drawing	4. Painting
5. Mixed Media incl. Collage	6. Sculpture
7. 3D Object	
Champion Ribbon – Classes 1-7 & Prize Money Most Successful Exhibitor Prize All donated by Leather & Thread Wodonga	
<u>YEAR 8</u>	
8. Metalwork (specify if in kit form)	9. Woodwork
10. Drawing	11. Painting
12. Mixed Media incl. Collage	13. Sculpture
14. 3D Object	
Champion Ribbon – Classes 8-14 & Prize Money Most Successful Exhibitor Prize All donated by Leather & Thread Wodonga	

CLASS	CLASS
<u>YEAR 9</u>	
15. Metalwork (specify if in kit form)	16. Woodwork
17. Drawing	18. Painting
19. Mixed Media incl. Collage	20. Sculpture
21. 3D Object	
Champion Ribbon – Classes 15-21 & Prize Money	
Most Successful Exhibitor Prize	
All donated by Leather & Thread Wodonga	
<u>YEAR 10</u>	
22. Metalwork (specify if in kit form)	23. Woodwork
24. Drawing	25. Painting
26. Mixed Media incl. Collage	27. Sculpture
28. 3D Object	
Champion Ribbon – Classes 22-28 & Prize Money	
Most Successful Exhibitor Prize	
All donated by Leather & Thread Wodonga	
<u>YEAR 11</u>	
29. Metalwork (specify if in kit form)	30. Woodwork
31. Drawing	32. Painting
33. Mixed Media incl. Collage	34. Sculpture
35. 3D Object	
Champion Ribbon – Classes 29-35 & Prize Money	
Most Successful Exhibitor Prize	
All donated by Leather & Thread Wodonga	
<u>YEAR 12</u>	
36. Metalwork (specify if in kit form)	37. Woodwork
38. Drawing	39. Painting
40. Mixed Media incl. Collage	41. Sculpture
42. 3D Object	
Champion Ribbon – Classes 36-42 & Prize Money	
Most Successful Exhibitor Prize	
All donated by Leather & Thread Wodonga	





SECTION R – NEEDLEWORK – OPEN & NOVICE

1st Prize -\$4. 2nd Prize -\$2 (unless otherwise stated)

Entry FREE

All Exhibits in this Section **must be** at the Henderson Pavilion between 2-5pm Friday 20th October.

- Judging commences at 9am on Saturday 21st.
- If the makers name (or any other name) is on the exhibit this must be covered.
- All articles are to be clean and the bona fide work of the Exhibitor.
- Your prize card is your prize voucher – prize money is available after 4.00pm on Show Day.
- No exhibit is to be removed before 4.00pm and must be arranged with a Steward.
- Refer to Pavilion Conditions.

CLASS		
KNITTING AND CROCHET		
<u>NOVICE</u>		
<ol style="list-style-type: none">1. Knitted Baby article, up to 12 months of age.2. Knitted garments – either scarf, bag, beanie, mittens, and gloves.3. Knitted homewares – tea cosies, cushions, knee rugs.4. Crocheted Rug – less than 1m on one side.		
<u>OPEN</u>		
<ol style="list-style-type: none">5. Knitted Baby wear, up to 2 years of age.6. Hand knitted article.7. Knitted Shawl – made with any mix of wool, wool blends, silks, and alpaca wool.8. Crocheted article or outfit.		
Champion & Reserve Champion Ribbons Sponsored by The Rutherglen Hardware		
SEWING		
<u>NOVICE</u>		
<ol style="list-style-type: none">9. A garment of stretch.10. A child's dress/frock.11. Any article of dressmaking not specified.		
<u>OPEN</u>		
<ol style="list-style-type: none">12. A garment of stretch.13. A child's dress/frock.14. Any article of dressmaking not specified.		
Champion & Reserve Champion Ribbons Sponsored by The Rutherglen Hardware		
QUILTING		
<u>NOVICE AND OPEN</u>		
<ol style="list-style-type: none">15. Any article of patchwork.		
Champion & Reserve Champion Ribbons Sponsored by The Rutherglen Hardware		



**The
Rutherglen
Hardware**



O'CONNORS

CASE

COROWA

437-447 Honour Ave
Corowa, NSW, 2646

P: 02 6033 1666

E: corowa@jjoconnor.com.au

GREAT FARMERS DESERVE GREAT MACHINERY

OPERATING HOURS

Mon-Fri: 8:30AM – 5:00PM

Extended operating hours during harvest

AFTER-HOURS CONTACT

02 6033 1666



VAS COMPETITIONS

VICTORIAN AGRICULTURAL SHOWS LTD

For further information on any of these competitions please refer to our website

www.rutherglenwineshow.com.au for the full criteria, or contact the Ag Show Coordinator via email wineagshow@westnet.com.au or phone 0400805437 for assistance.



- **Rural Ambassador Award** – Open to persons 20-30 years of age as of 1st May 2024 and must reside in Victoria.
 - **Sponsors – State Level** Melbourne Royal, Gallagher, & RB Sellars
- **Junior Show Ambassador** – Open to persons aged between 16 & 19 years on day of Show.
 - **Sponsor – State Level** Gallagher
- **Baking** – must follow the recipe and specs provided for all of these competitions.
 - VAS Ltd Rich Fruit Cake
 - VAS Ltd Junior Boiled Fruit Cake – Under 18 years on Show Day.
 - VAS Ltd Carrot Cake
 - VAS Ltd Junior Carrot & Date Muffins
 - **Sponsor of both – State Level** Rocky Lamattina & Sons
- **Homecrafts**
 - **VAS Ltd Sewing Competition**
 - Wearable Vest, fully lined with embellishments allowed.
 - **VAS Ltd Crochet Competition**
 - A 3D Item, No larger than 50cms on any one side made from Pure Wool/Wool blend of any ply.
 - **VAS Ltd Patchwork Competition**
 - The exhibit is to be not more than one metre on any one side.
 - **VAS Ltd Knitting Competition**
 - A Hand Knitted Blanket not more than one metre on any one side.
 - **VAS Ltd Embroidery Competition**
 - The Exhibit to be an article of hand embroidery, any type, excluding cross stitch.
 - **VAS Ltd Cross Stitch Competition**
 - The Exhibit to be an article of cross stitch, any type, up to 60cms on all sides including frame. Minimal embellishments allowed.
 - **Sponsor of all Homecrafts – State Level** Spotlight
- **VAS Ltd Senior Photography**
 - Theme for 2023/24 – **Animal/s in Action** – Unframed.
- **VAS Ltd Junior Photography**
 - Theme for 2023/24 – **Animal/s in Action** - Unframed



SPOTLIGHT



MELBOURNE
ROYAL



Gallagher

RB
SELLARS

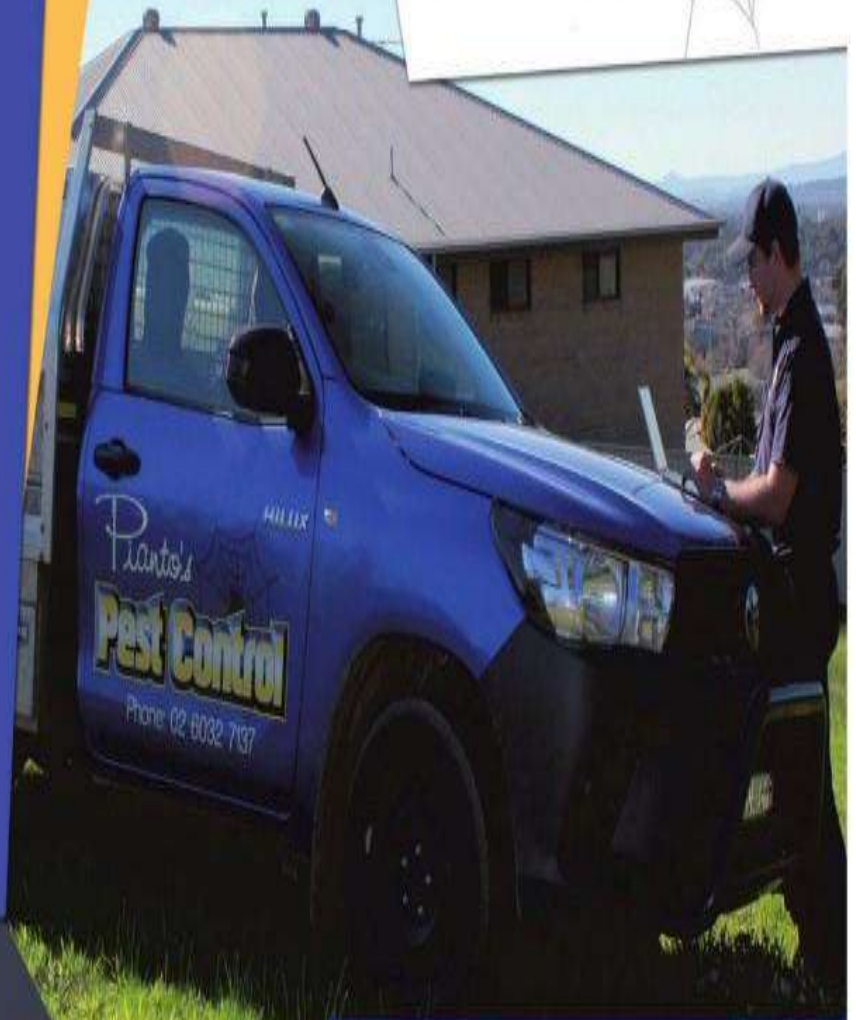
PESTS?

Spiders, Termites, Rodents,
Carpet Beetles, Ants, Fleas
Wasps or **WORSE?**

We Can Help!

- Domestic & Commercial Pest Control
- Timber Pest & Building Inspections
- Termite Treatments
- Thorough Written Reports
- Free, No-Obligation Quotes
- All work Guaranteed

Albury, Wodonga, Rutherglen, Tallangatta, Yarrawonga,
Shepparton, Wangaratta, Howlong, & surrounding areas.



www.piantospestcontrol.com.au

office@pianospestcontrol.com.au

VIC Lic No. L005632 | NSW Lic No. 5091710

(02) 6032 7137

RUTHERGLEN SHOW GIRL/BOY COMPETITIONS

Judging to commence at **11.00am** – Note NEW TIME

Entry **FREE**

NEAT CASUAL ATTIRE SUITABLE FOR HAVING FUN AT A COUNTRY SHOW TO BE WORN.
SUN HATS ARE ADVISABLE.

MASTER TINY TOT

3 – 5 YEARS OF AGE – Sash and Prize awarded.

MISS TINY TOT

3 – 5 YEARS OF AGE - Sash and Prize awarded.

JUNIOR COMPETITION

Open to girls 6 – 9 YEARS OF AGE – Sash & Prize awarded.

Open to boys 6 – 9 YEARS OF AGE – Sash & Prize awarded.

Open to girls 10 –12 YEARS OF AGE – Sash & Prize awarded.

Open to boys 10 –12 YEARS OF AGE – Sash & Prize awarded.



All sections kindly sponsored by **Gelatina** and **Rutherglen Lolly Shop**.

INTERMEDIATE COMPETITION

Open to girls 13 – 16 YEARS OF AGE

Sash & Prize donated by **Trevor and Diane Smith**.

We thank **Federation Steel & Industrial Corowa** for the kind use of their trailer for this year's Show Girl/Boy Competition.

124-138 Federation Avenue, Corowa 2646 02 6033 5516

– Call in and see what they can do for you!



STAR HOTEL-MOTEL

Established 1860

**EASTERN PALACE CHINESE RESTAURANT
TRADITIONAL PUB FARE
02 6032 9522**



- Pool Table
- Jukebox
- Keno
- Sports Bar
- Beer Garden
- Bottle shop
- Function Room
- 6 Motel Rooms



Situated in the centre of town.

105 Main Street Rutherglen

Hosts: Lee-Anne & Phill

02 6032 9625

Seed Grain Hay Sheep & Cattle Producers

PO Box 178
RUTHERGLEN VIC. 3685

Phone: 0260 328 542

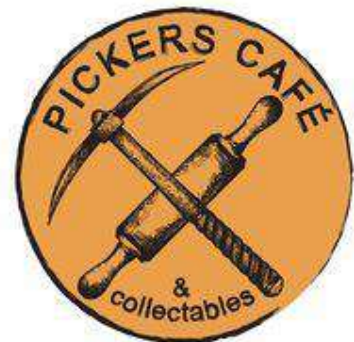
For enquiries contact:

Andrew Russell
0417 401 004
Sue Russell
0417 401 002

srussell@lilliput-ag.com.au



Rutherglen Agricultural Society would like to thank **Lilliput Ag** for their generous support at this year's show.



We would like to thank **Destination Rutherglen** for their support of our Annual Show in 2023.

SECTION 1 – FARM PRODUCE

1st Prize - \$8. 2nd - \$4 (unless otherwise stated)

Entry Fee \$2.50

Farm Produce generously supported by AgNVet Rutherglen, Lilliput Ag, and JF & EM Terrill & Son Rutherglen.

- Entries must be at the PRODUCE PAVILION by 9am on Show Day.
- Judging will commence at 9.30am.



CLASS	CLASS
<u>CROP COMPETITION</u>	
1. Wheat crop – Exhibit Sheaf pulled by roots.	2. Oat crop – Exhibit sheaf pulled by roots.
3. Triticale crop – Exhibit sheaf pulled by the roots.	4. Lupin/Faba Bean crop – Exhibit sheaf pulled by the roots.
5. Canola crop – Exhibit sheaf pulled by the roots.	6. Sample of Wheat off-header (10kgs)
7. Sample of Oats off-header (10kgs)	8. Sample of Triticale off-header (10kgs)
9. Sample of Lupins/Faba Beans off-header (10kgs)	10. Sample of Lucerne Hay (10kgs)
11. Sample of Pasture Hay (10kgs)	12. Sample of Clover Hay (10kgs)
Most Successfully Cereal Exhibitor – Classes 1, 2, 3, 6, 7, and 8	
Most Successful Legume Exhibitor – Classes 4, 5, and 9	
Most Successful Hay Exhibitor – Classes 10, 11, and 12	

AGnVET



SECTION 6 – POULTRY & EGGS

Poultry Section generously sponsored by:



CONDITIONS OF ENTRY

- Birds must be penned by 9 am
- All birds must be the property of the exhibitor.
- Juniors are to be 16 and under
- All birds are to be free of illness and parasites and the Stewards and Judge have the right to remove the bird from the shed.
- No marking of cages
- **PLEASE BRING WATER CONTAINERS FOR YOUR BIRDS TO DRINK FROM**
- It is an offence for any person to remove eggs from any of the Show Pens or Show Premises without authority from the Steward or Secretary
- Exhibitors entering the Open and Junior Poultry sections are ineligible to enter the Backyard Poultry section.
- Birds may be collected from 4 pm
- Present your prize card to Steward to receive your prize – available after 4 pm on Show Day

Backyard Poultry

Judging commences at 9.30 am

Entry FREE

PRESENTATION OF PRIZES will be held at 11.30 am

- Ribbons for 1st, 2nd and Highly Commended plus prizes for section winners
- To be judged on how well the birds are presented, plus criteria for each section, eg “good manners”

BACKYARD	Class No.	
	Male	Female
White Bird	1	2
Brown Bird	3	4
Black Bird	5	6
Patterned/Multi-colour Bird	7	8
Ugliest Bird	9	10
Friendliest Bird	11	12

Bring your favourite chooks from home

CHAMPION & RESERVE CHAMPION RIBBONS FOR BEST PRESENTED BACKYARD BIRD

1 bag Layer Pellets donated by [Rivalea Australia](#)

Open & Junior Poultry

Judging commences at 9.30 am

Entry Fee 50c

PRESENTATION OF PRIZES will be held at 11.30 am

Ribbons for 1st, 2nd and Highly Commended plus prizes for section winners

ABBREVIATIONS:

AOC – ANY OTHER COLOUR
AV – ANY VARIETY
S/F – SOFT FEATHER
OEG – OLD ENGLISH GAME

AC – ANY COLOUR
AOV – ANY OTHER VARIETY
H/F – HARD FEATHER



Open Poultry

Judging commences at 9.30 am

Entry Fee 50c

PRESENTATION OF PRIZES will be held at 11.30 am.

HARDFEATHER	Class No.		HARDFEATHER	Class No.	
	Male	Female		Male	Female
STANDARD			BANTAM		
OEG Black Red	13	14	OEG Black Red	31	32
OEG Partridge Clay or Wheaten	15	16	OEG Partridge or Wheaten	33	34
OEG Blue Red	17	18	OEG Spangle	35	36
OEG Duckwing	19	20	OEG Duckwing	37	38
OEG AOC	21	22	OEG Blue Red	39	40
Moderns AC	23	24	OEG AOC	41	42
Indian Game, Any Colour	25	26	Modern AC	43	44
Australian Pit Game	27	28	Indian Game Any colour	45	46
Game AOV	29	30	Australian Pit Game	47	48
			Game AOV	49	50
SOFTFEATHER	Class No.		SOFTFEATHER	Class No.	
	Male	Female		Male	Female
STANDARD			BANTAM		
Leghorn White	51	52	Wyandotte White	73	74
Leghorn AOC	53	54	Wyandotte AOC	75	76
Silkie White	55	56	Rhode Island	77	78
Silkie AOC	57	58	Australorp	79	80
Australorp	59	60	Langshan	81	82
Langshan	61	62	Sebright	83	84
Rhode Island	63	64	Pekin AC	85	86
Sussex ac	65	66	Leghorn, White	87	88
Orpington	67	68	Leghorn AOC	89	90
Wyandotte AC	69	70	Rosecomb	91	92
AOV	71	72	AOV	93	94

WATERFOWL	Class No.		FIELD & FOREST	Class No.	
	Male	Female		Male	Female
Muscovy	95	96	Guinea Fowl	105	106
Indian Runner	97	98	Turkey	107	108
AOV	99	100			
Rouen Duck	101	102			
Call Duck	103	104			



CHAMPIONS

Champion Large Softfeather
Reserve Champion Large Softfeather
Champion Large Hardfeather
Reserve Champion Large Hardfeather
Champion Bantam Softfeather
Reserve Champion Bantam Softfeather
Champion Bantam Hardfeather
Reserve Champion Bantam Hardfeather
Champion Waterfowl
Reserve Champion Waterfowl



GRAND CHAMPION BIRD OF SHOW & RESERVE CHAMPION BIRD OF SHOW

Junior Poultry

Judging commences at 9.30 am
PRESENTATION OF PRIZES will be held at 11.30 am.

ENTRY FREE

- Exhibitors must be 16 and under
- Exhibits to be penned by the Exhibitor.
- Juniors are **NOT** eligible to enter in both Open and Junior Classes



LARGE BIRD	Class No.		BANTAM	Class No.	
	Male	Female		Male	Female
Softfeather AV	109	110	Softfeather AV	113	114
Hardfeather AV	111	112	Hardfeather AV	115	116

WATERFOWL	Class No.	
	Male	Female
Any Variety	117	118

CHAMPIONS

Champion Junior Bantam
Reserve Champion Junior Bantam
Champion Junior Large Fowl
Reserve Champion Junior Large Fowl
Champion Junior Waterfowl
Reserve Champion Junior Waterfowl
Junior Encouragement Award



GRAND CHAMPION & RESERVE CHAMPION JUNIOR BIRD

Entry Information for Section 6 – Poultry & Eggs

All entries are to be sent via email to wineagshow@westnet.com.au on the relevant entry form, which can be found on the Show website rutherglenwineshow.com.au

EGGS

Judging commences 9.30 am

Entry FREE

PRESENTATION OF PRIZES will be held at 11.30 am

- All Exhibits must be displayed before 9 am on Show Day
- Plates with shavings will be supplied to display eggs on
- **Ribbons for 1st, 2nd and Highly Commended**
- Exhibitors are not able to advertise their eggs for sale.



	Class No.		Class No.
3 Duck Eggs	119	3 White Bantam Eggs	120
3 White Hen Eggs	121	3 Tinted Bantam Eggs	122
3 Tinted Hen Eggs	123	3 Unusually Coloured Eggs	124
3 Turkey Eggs	125		

CHAMPION & RESERVE CHAMPION EGGS



Entry Information for Section 6 – Poultry & Eggs

All entries are to be sent via **email** to wineagshow@westnet.com.au on the relevant entry form, which can be found on the Show website rutherglenwineshow.com.au



Don't forget to purchase some luncheon tickets and sit down savouring delicious homemade goodies while relaxing in the Tennis Club rooms, or if you prefer the Rutherglen High School have their BBQ operating with something for every taste!

SECTION 7 - CATTLE

JUNIOR CATTLE SECTION

CONDITIONS OF ENTRY

Ribbons for 1st & 2nd & Highly Commended

- ALL AGES TO BE APPLICABLE ON 1st October 2023.
- ALL exhibits must be **NLIS** tagged and will be scanned and sighted by the Show Society on the day, prior to the event.
- All cattle/exhibitors must provide a clearly printed PIC on their entry form.
- Rutherglen Agricultural Society's PIC is 3INCP099
- All exhibits are shown and stalled at risk of the exhibitor and no responsibility can be accepted by the Society in respect of these exhibits.
- If, in the opinion of the Committee, any exhibits are deemed dangerous, the owner shall immediately remove the exhibit from the Show grounds, upon notice to that effect.

JUNIOR PARADERS COMPETITION

Judging commences at 10am at the Cattle Ring.

Entry FREE

- Junior Paraders Classes are for cattle registered with a recognised Breed Society and led commercial heifers and steers.
- Classes may be split or combined based on availability of animals and numbers of competitors.
- All Cattle must be led and able to tie up.
- All male exhibits of cattle over the age of twelve (12) months shall be ringed through the nose, and when on parade or going to and from shall be led by such ring.
- All cattle over six (6) months are recommended to have nose clips.
- Each exhibitor is required to see that each of his exhibits is securely tethered in its stall and be tethered by halter and neck strap.
- A Parader must be attired in suitable clothing including solid shoes or boots.
- Each competitor may enter only one class.

Class 1: Novice Paraders Section	8 years to under 11 years of age
Class 2: Junior Paraders Section	11 years to under 15 years of age
Class 3: Open Paraders Section	15 years and not more than 25 years
Champion Junior Parader	
Reserve Champion Junior Parader	

JUNIOR JUDGING COMPETITION

Event will commence immediately after Junior Paraders Competition.

Entry FREE

Class 4: Novice Judging Section	8 years to under 11 years of age
Class 5: Junior Judging Section	11 years to under 15 years of age
Class 6: Open Judging Section	15 years and not more than 25 years
Champion Junior Judge	
Reserve Champion Junior Judge	

JUNIOR HEIFER BONANZA

Entry FREE

Class 7: Junior Heifer- under 24 months – **Champion & Reserve**



SECTION A – SHOW DAY SPECIAL EVENTS

(A1) Pet Parade – ‘Jack O’Keefe Memorial’

Judging commences at 1pm.

Entry FREE

Sponsored by **Rutherglen Vet Clinic** - with the assistance of staff from **AGnVET Services Rutherglen**.

Prizes and Ribbons in all classes.

Class No:	
1	Prettiest Bird
2	Most Unusual Pet
3	Fastest Eater
4	Prettiest Pet
5	Best Groomed Puppy
6	Best Groomed Dog
7	The Waggiest Tail
8	Fancy Dressed Animal and Handler



RUTHERGLEN

AGnVET

Cnr Murray Valley Hwy & Gooramadda Rd,
Rutherglen VIC 3685

Ph: **02 6032 9533**



149 Main Street, Rutherglen, VIC, Australia, 3685
(02) 6032 8022

rutherglenvet@gmail.com

<https://www.rutherglenvet.com.au/>



03 5744 0889

107 BENALLA-YARRAWONGA RD, YARRAWONGA VIC

02 6025 1112

ALBURY YARD 459 WAGGA RD, LAVINGTON, NSW

MO054645

E: admin@simplycaravans.com.au

www.simplycaravans.com.au

(A6) Dog Jumping Competition

Heats commence at 10.30 am

Entry FREE

Class No:	
1	Small Dog under 50 cms
2	Medium Dog 50 cms and less than 60 cms
3	Large Dog 60 cms and over



Rules & Regulations

1. This competition is a test of the dog's jumping ability.
2. The competition is open to all dogs.
3. The dog is permitted to jump onto or over the jump.
4. All dogs not competing must be on a lead with a handler in the marshalling area behind the competition area.
5. Competition area should be 15 metres long by 8 metres wide.
6. Only one dog may be loose in the competition area at any one time.
7. There must be a handler at the top of the jump to act as a catcher if necessary and a handler as a catcher at the bottom.
8. The dog's owner must supply one extra handler.
9. A ladder will be provided for the handler.
10. Each dog is allowed three attempts at each height.
11. In the event of two dogs jumping the same height, the winner shall be determined as the dog that took the least number of attempts for the winning height.
12. A dog may compete on a loose lead.
13. If the dog is not on a loose lead the dog must be released at a minimum of three metres from the jump.
14. Any mishandling or misuse of a dog will incur immediate disqualification.
15. If, in the opinion of the Stewards, the dog is unsafe to other competitors or the general public it will be withdrawn from the competition.

Placegetter Prizes for all classes proudly sponsored by STAUGHTON GROUP, Howlong - makers of AUSSIE and LIFE BALANCE products for dogs and cats

(A6-2) Staghound/Hunting Dog Jump

This event will commence at 3.30pm

Entry FREE

Bring along your Stag or other breed of large hunting dog and see who has boasting rights.



ENTERTAINMENT FOR ALL

WOODCHOPPING COMPETITION

Events commence at 12.00 pm

Park Side of Main Arena

THE WOOD CHOP IS BACK!

NORTH EASTERN AND BORDER AXEMAN'S ASSOCIATION



Presents The Following Competition Events For Everyone's Enjoyment:

1. 300mm Underhand Hard-hitting Championship	Prizes: 1 st \$300, 2 nd \$200, 3 rd \$100, 4 th \$50
2. 300mm Open Underhand Handicap	1 st \$500, 2 nd \$200, 3 rd \$100, 4 th \$50, 5 th \$20, 6 th \$20
3. 250mm Open Standing Block Handicap	1 st \$500, 2 nd \$200, 3 rd \$100, 4 th \$50, 5 th \$20, 6 th \$20
4. 275mm 2 nd Div Underhand Handicap*	1 st \$250, 2 nd \$100, 3 rd \$50
5. 275mm Ladies Underhand Handicap	1 st \$200, 2 nd \$100, 3 rd \$50
6. 250mm Junior Underhand Handicap	1 st \$50, 2 nd \$40, 3 rd \$30
7. Teams Race (competitors determined on day)	\$600 (divided between all competitors)
Nominations close Friday 6th October 2023 @ 5pm to Brent Smith 0400 112 665	
All entries \$20 per event, juniors free – no entry fee for event 7	Payment to NEBAA: BSB 033264 Acc: 690958 Please use name & RUTH as reference.
Events 2 and 3 will be limited to first 24 entries received.	
Hard-Hitting championship limited to 8 highest handicap competitors on the day. *2 nd Div Underhand handicap limited to 8 highest handicap competitors not competing in championship.	
All events conducted under the rules and regulations of the NEBAA and AAA. NEBAA reserves the right to alter the program without notice.	



ESTD 1859
MORRIS
RUTHERGLEN

Casella
FAMILY

TENT PEGGING DEMONSTRATION

Event commences at 2pm

Park side of Main Arena

Presented by Victorian Tent Pegging Association

Don't miss the chance to see a tent pegging demonstration by some of Australia's best representatives.



What is tent pegging?

Tent pegging is a cavalry sport of ancient origin and is one of only ten equestrian disciplines officially recognized by the International Equestrian Federation.

According to the Federation, it is believed that tent pegging originated in India in the middle ages in the battlefields as a tactic used by the horsed cavalry against elephant mounted troops.

It is certainly related to the idea that cavaliers mounting a surprise pre-dawn raid on an enemy camp could use their skills to sever or uproot tent pegs, thus collapsing the tents on their sleeping occupants and causing havoc and terror in the camp.



The specific game of tent pegging has a mounted horseman riding at a gallop and using a sword or a lance to pierce, pick up, and carry away a small ground target (a symbolic tent peg) or a series of small ground targets.

The broader class of tent pegging games also includes ring jousting (in which a galloping rider tries to pass the point of his weapon through a suspended ring); lemon sticking (in which the rider tries to stab or slice a lemon suspended from a cord or sitting on a platform); quintain tilting (in which the rider charges a mannequin mounted on a swivelling or rocking pedestal); and Parthian (i.e., mounted) archery.



Tentpegging Victoria have training days every 3rd Sat of the Month In Albury at the Wirlinga Pony Club grounds at 10am. If you are interested in the sport, contact Donna via their Facebook page.

We sincerely thank our major local and district business supporters:



RUTHERGLEN AGRICULTURAL SOCIETY INC.

AFFILIATED WITH VICTORIAN AGRICULTURAL SHOWS LTD.



President:

Greg Lumby
0427 357 235

Show Co-ordinator:

Kay Lumby
0400 805 437

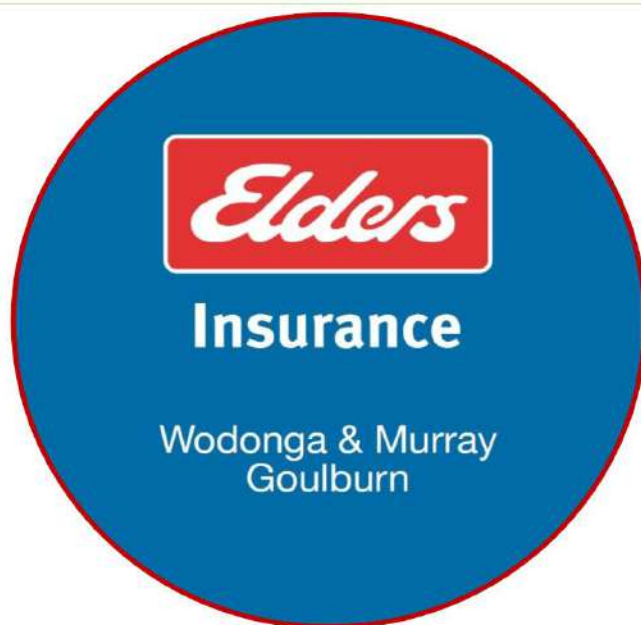
Website: www.rutherglenwineshow.com.au

PO Box 106, Rutherglen 3685

Email: wineagshow@westnet.com.au

Phone: 02 6032 8044

Show Office: Henderson Pavilion, 171 High Street Rutherglen 3685



Michael Middleton
Julie Lawrence &
Dymitie Rhodes

Locals looking after locals.

297 Schubach Street, Albury NSW 2640 | (02) 6042 0160 | E: insurancewmg@elders.com.au
W: eldersinsurance.com.au/wmg | @eldersinsurancewmg | Monday-Friday 8.30am—5pm

Whether it's your home and contents, your car or your boat, we know how important your personal assets are. Our personal insurance can cover it all. And if the unexpected happens, our local team will be on hand to help.

Need flexible farm cover? We're here to help.

Contact us today to learn more.